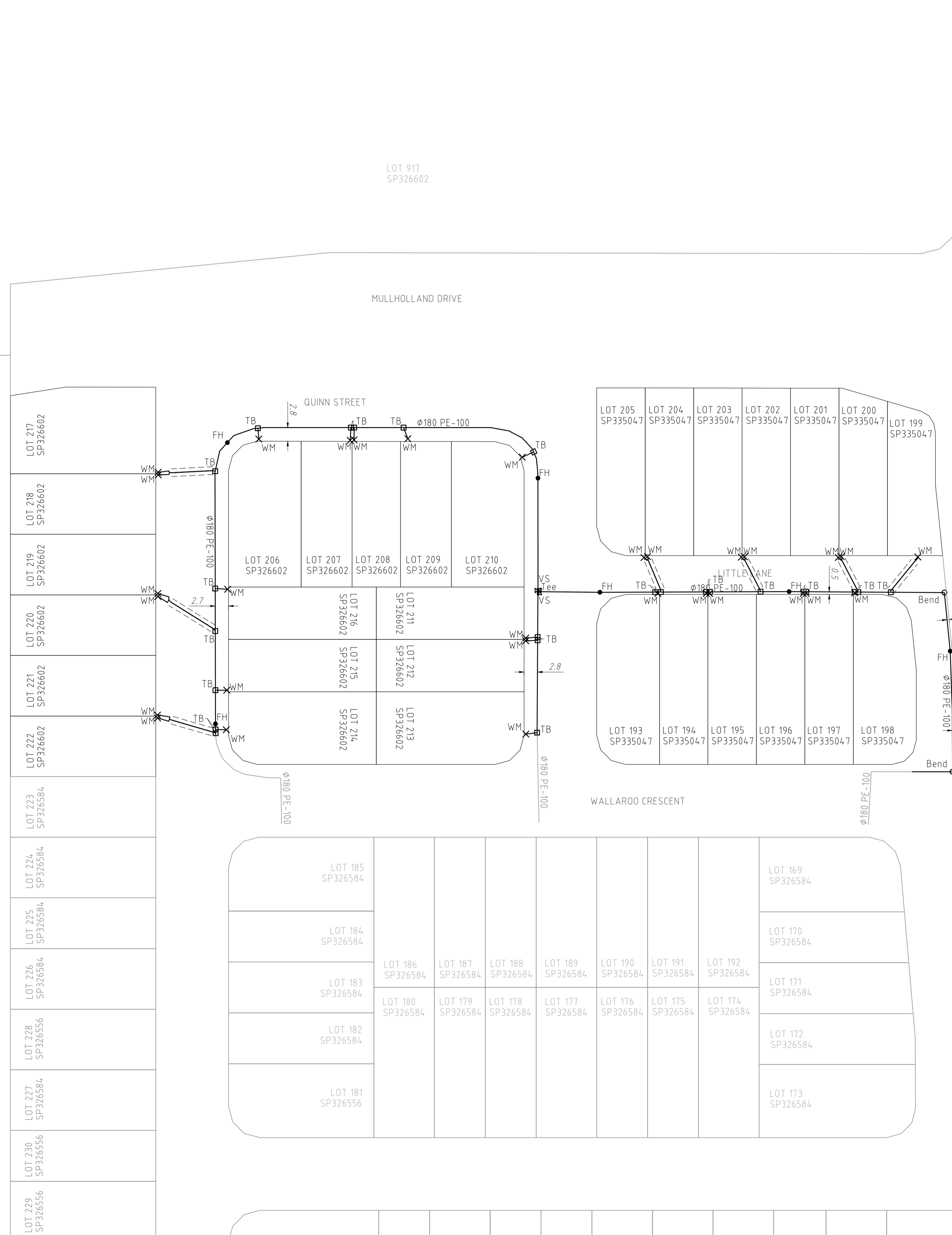




LEGEND

- (FH) FIRE HYDRANT / (DFH) DUCKFOOT
- ⊞ (VS) STOP VALVE
- ✕ (VA) SCOUR ASSEMBLY
- (TB) TAPPING BAND
- × (WM) WATER METER (SEQ 20φ)
- ⌋ END CAP
- ⊥ TEE
- ^ (RE) REDUCER
- BEND
- DICL WATER MAIN CROSSING
- CONDUIT / CROSSING
- EXISTING WATER

- NOTES
- ALL WATER RETICULATION PIPES ARE ø180 PE-100 PN16 U.N.O.
  - ALL WATER SERVICE CROSSING PIPES ARE ø100 PVC-M PN16 U.N.O.
  - ALL FIRE HYDRANTS ARE ø100 SPRING U.N.O.



**REGISTERED SURVEYOR'S CERTIFICATION**

I, LandPartners Pty Ltd..... hereby certify that the vertical and horizontal locations and dimensions shown on this plan are a true and correct record and were located by survey.

*R. G. Anderson* Authorised Delegate  
LandPartners Pty Ltd, Reg. Surveyor No. S4118 Date: 24/01/2024.

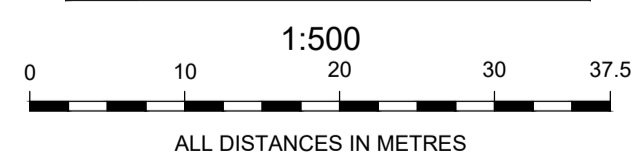
**ENGINEERS CERTIFICATION**

I, ....., hereby certify that:

- The information contained in this drawing / document is in compliance with approved drawings and design.
- The new water and sewerage works defined by this drawing have been designed and constructed in accordance with the SEQ Code.
- This represents an accurate record of as-constructed works.
- I accept responsibility for the information contained in this drawing / document.

RPEQ (signature) \_\_\_\_\_ RPEQ No. \_\_\_\_\_ Date: .....

AS CONSTRUCTED



A1	1	24/01/2024	INITIAL ISSUE	MJK	BJB	RA
	INDEX	DATE	REVISIONS	DRAWN	CHECKED	PASSED

DRAWN	MJK	24/01/2024
CHECKED	BJB	24/01/2024
PASSED	RA	24/01/2024
INITIALS	DATE	

**Queensland Urban Utilities**

236-240 MONTEREA RD PRECINCT 2 - STAGES 7 & 7A  
AS CONSTRUCTED WATER  
21-PNT-54.718

SCALE	1500
SHEET 1	OF 1 SHEETS
DRAWING NO.	BRSS6904-007-68-1