



3 2 1

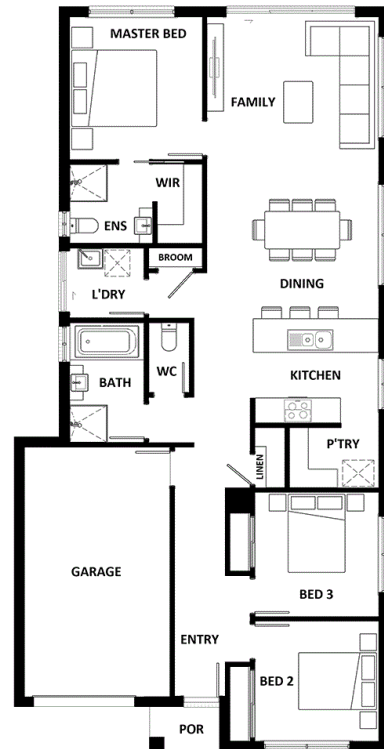
Lot 455 Johnson Circuit, Ripley QLD 4306

Pricing from **\$422,341**

House **\$224,341** | Land **\$198,000**

- Lifetime Structural Guarantee
- Site Allowance to H class soil
- Truecore Steel Frame & Trusses
- Open-plan kitchen, living and dining
- Developer Requirements Included
- Tiles or Vinyl Plank & Carpet Throughout
- Retreat Inclusions not limited to this list

House Area **146 m2** | Land Area **325 m2**



Disclaimer

Information contained herein is subject to change without notice. No responsibility is accepted by the vendor nor the agent for any action taken in reliance thereon. Prospective purchasers should make their own enquiries to satisfy themselves on all aspects. Details herein do not constitute any representation by the vendor or the agent and are expressly excluded from any contract. Images are artist's impression and for illustration purposes only. This plan is indicative only, and specific uses, alignments and boundaries shown may vary due to detail design consideration and approval by the relevant authorities.